

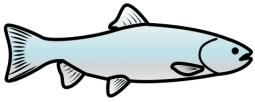
1.15 ONKO TÄSSÄ KALAA?



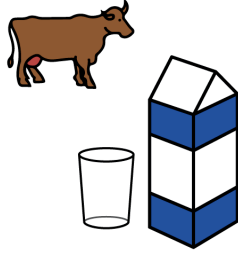
Onko tässä...?



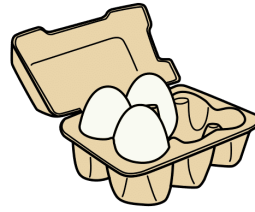
En voi syödä...



kalaa



maitoa



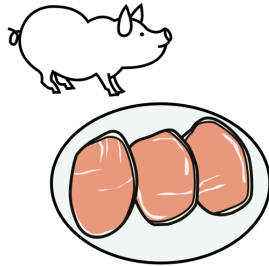
kananmunaa



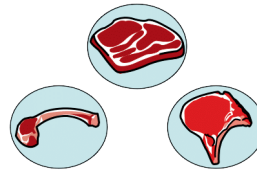
pähkinää



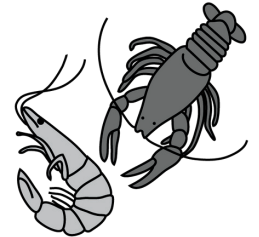
omenaa



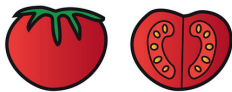
sianlihaa



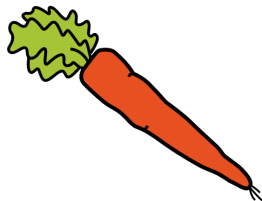
lihaa



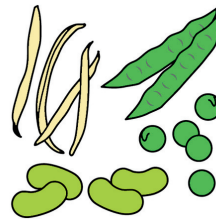
äyriäisiä



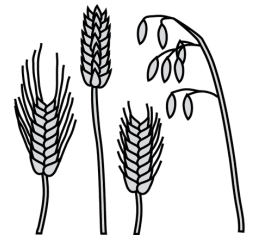
tomaattia



porkkanaa



papuja



viljaa

- Mitä saisi olla?
- Onko tässä porkkanaa?
- En voi syödä papuja.
- Onko tässä pastassa / pizzassa / hampurilaisessa / keitossa lihaa?